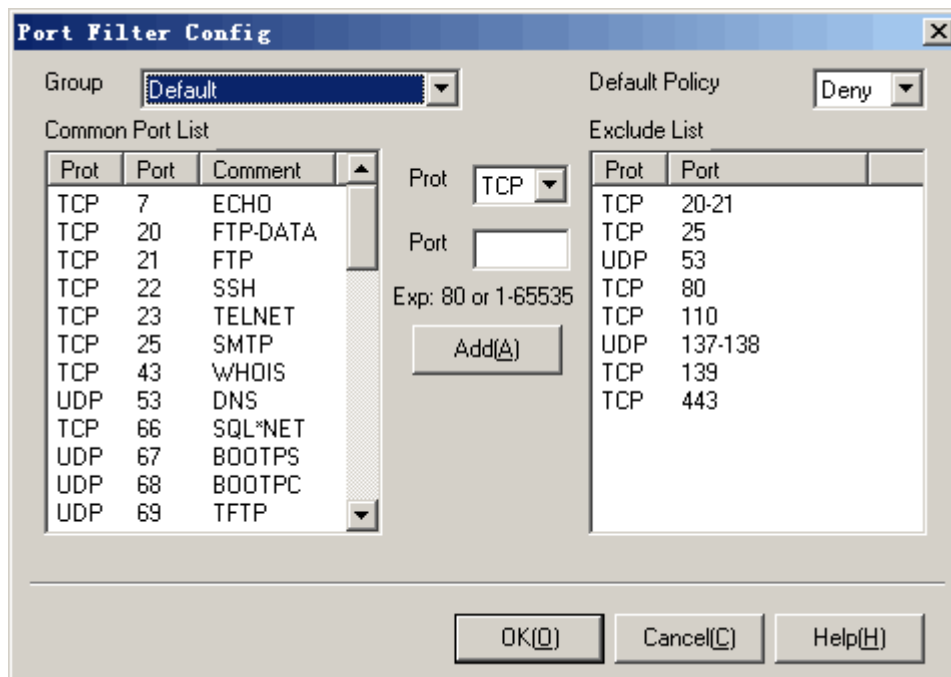


### 5.3. Port Filter

Port filter module can open or close some ports defined, in order to pass or block some services used by users in LAN. Following dialog shows:



Operation instructions:

1. Select a group which you want to configure in list [Group].
2. Select a default policy in the list [Default Policy].
3. In the left list [Common Port List], double click the port number then it will be sent into the right list [Exclude List].
4. If there is no port you want to select, please select a protocol type in the list [Prot]. Then enter a port number in the text box [Port]. Press <Add> to add the customized port into the right list.
5. In the right list [Exclude List], select a port or several ports and right click the mouse. In the popup menu, click the menu [Delete] to delete the ports.
6. Press <OK> or <Cancel>.

Additional instructions:

1. If the ports in the list [Common Port List] are "Deny", the ports in the list [Exclude List] are "Pass". If the ports in the list [Common Port List] are "Pass", the ports in the list [Exclude List] are "Deny".
2. When adding some ports, if the ports are in the same protocol and sequential, the software will combine them into a port range.



Note: UDP Port 53 is used for DNS service. When it is blocked, some other services may work abnormally.