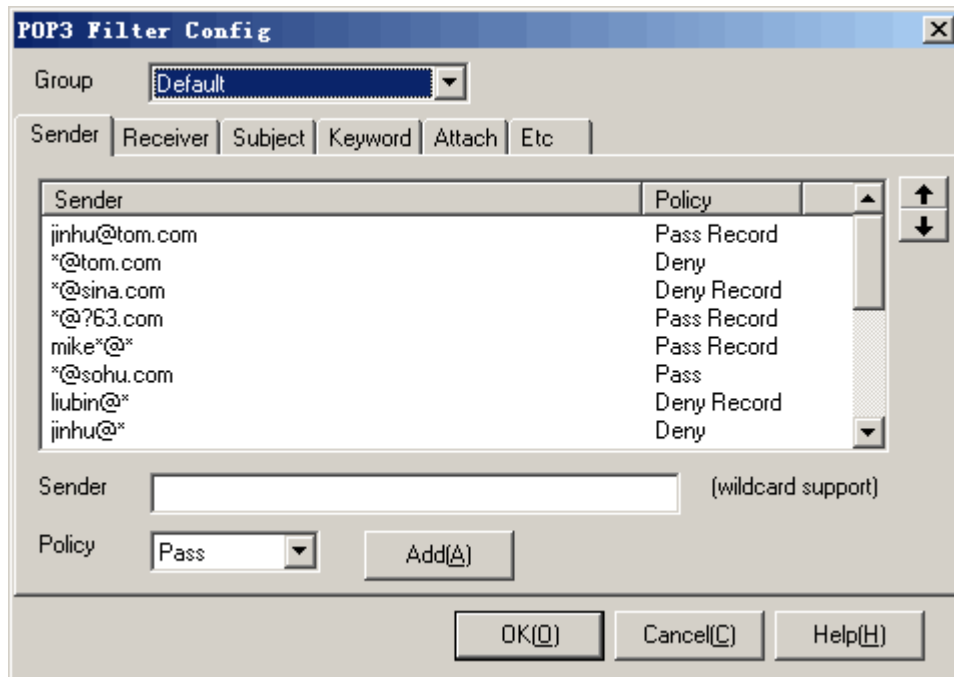


5.11. POP3 Filter

The POP3 filter module can filter all the mails received through POP3. This module works on sender address, receiver address, mail subject, mail main text, mail attachment and mail size. Following shows a [POP3 Filter Config] dialog:



Operation instruction:

1. Select a group which you want to configure in list [Group].
2. Fill the edit blanks, select a policy, and then press <Add>.
3. Select an item in the list, press <Up> or <Down> to adjust the order of the filters.
4. Select an item in the list, right click the mouse and press [Delete] in the popup menu to delete the item.
5. [Sender]: in the [Sender] tab, add a sender address, select a policy, and then press <Add>. When the mail's sender address matches this item, the policy will be applied. [Sender] filter applies wildcard match.
6. [Receiver]: in the [Receiver] tab, add a receiver address, select a policy, and then press <Add>. When the mail's receiver address matches this item, the policy will be applied. [Receiver] filter applies wildcard match.
7. [Subject]: in the [Subject] tab, add a subject, select a policy, and then press <Add>. When the mail's subject matches this item, the policy will be applied. [Subject] filter applies wildcard match.
8. [Keyword]: in the [Keyword] tab, add a keyword, select a policy, and then press <Add>. When the mail's main text including the keyword matches this item, the policy will be applied.
9. [Attach]: in the [Attach] tab, add a file, select a policy, and then press <Add>. When the mail's attachment matches this item, the policy will be applied. [Attach] filter applies wildcard match.
10. [Receive mail size limit]: in the [Etc] card, when selecting this option, the user can not receive a mail which has more than the limit number (Kbytes).
11. Press <OK> or <Cancel>.

Additional instruction:

1. This module works only for the POP3 protocol. If you want to filter mails through HTTP,

please refer to the HTTP filter module.

2. All the following tabs are ordered top-down: [Sender], [Receiver], [Subject], [Keyword] and [Attach].
3. If a mail through POP3 protocol goes into several filters, in which only one filter's policy is "Deny" or "Deny Record", this mail will be denied..



Note: The POP3 filtering module will not deliberately delete the mails which are denied. Meanwhile, POP3 client software tries to receive mails ordered in a queue. This may lead to a block in the receiving procedure. When this happens, users should delete the "denied" mails manually in POP3 servers.