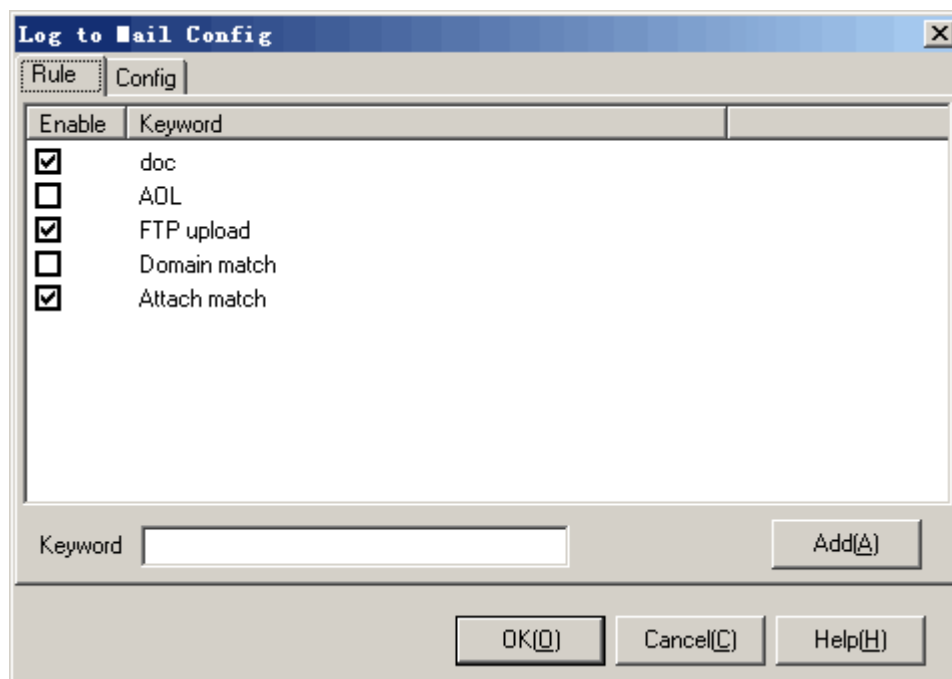


5.17. Log to Mail

This module can send urgent message through e-mail to a defined mail-box. Following shows a [Log to Mail Config] dialog:



Operation instruction:

1. [Rule]: Fill in the [Keyword] blank, and then press <Add>. When the event record content includes the keyword, an email will be sent into the defined mail-box.
2. Select an item in the list, right click the mouse and press [Delete] in the popup menu to delete the item.
3. [Config]: Fill the [Config] tab with the defined mailbox address, SMTP server and so on.
4. Press <Test> to verify the configuration whether is OK or not. The verification procedure can send a test mail to the mailbox.
5. Press <OK> or <Cancel>.

Additional instruction:

1. [Mail to]: fill in a mailbox which is used for receiving alert.
2. [Send from]: fill in a mailbox which is used for sending alert.
3. [SMTP server]: server name which is used for sending mail.
4. [SMTP server requires authentication]: some SMTP servers require user authentication to send mails. If that happens, please select this option and fill in the [Account] and [Pass].
5. [Account]: SMTP authentication account.
6. [Pass]: SMTP authentication password.