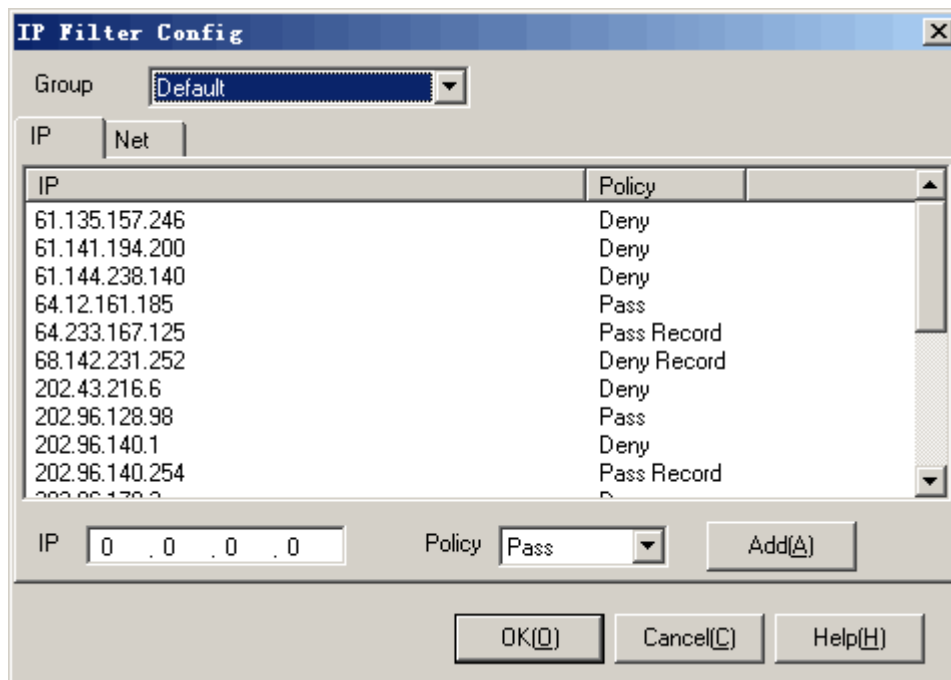


5.7. IP Filter

It can filter the IP destination address on the Internet which visited by users in LAN. Following shows a [IP Filter Config] dialog:



Operation instruction:

1. Select a group which you want to configure in list [Group].
2. Double click in the list, edit the content of the item, and then press <Add>.
3. Add IP filtering: select [IP] tab, input IP address, select a policy and then press <Add>.
4. Add subnet filtering: select [Net] tab, input a network number and a length of mask, select a policy, and then press <Add>.
5. Select the item which you want to modify, right click the mouse, select [Delete] in the popup menu to delete the item in the list.
6. Press <OK> or <Cancel>.

Additional instruction:

1. [Subnet]: CIDR network prefix presentation (RFC 1878) is used for recording IP address. For example, an IP address 210.31.233.1, with its mask 255.255.255.0, can be recorded as 210.31.233.1/24; an IP address 166.133.67.98, with its mask 255.255.0.0, can be recorded as 166.133.67.98/16; an IP address 192.168.0.1, with its mask 255.255.255.240, can be recorded as 192.168.0.1/28, etc.
2. The order of filtering is ascending. For example, IP "61.141.238.1" policy is "Pass", and subnet "61.141.238.0/24" policy is "Deny", which means that the only IP "61.141.238.1" can be passed in the subnet "61.141.238.0/24", all the other IP addresses are denied.



Tip: All the IP and subnet mentioned in this filter are address or site on the Internet, not in LAN. For IP filtering in LAN, please set in the main frame.