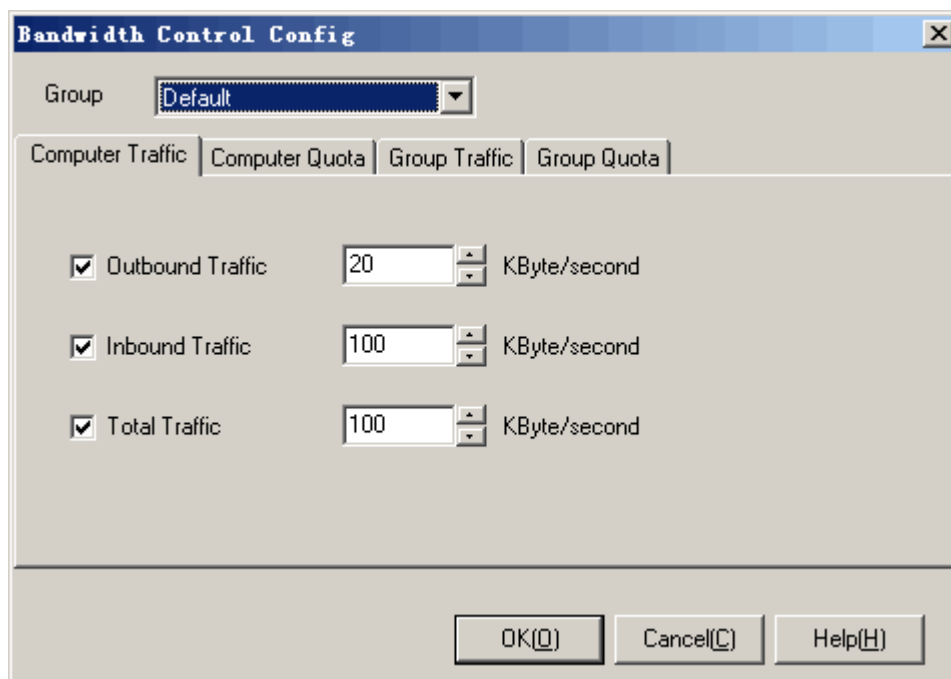


5.4. Bandwidth Control

The bandwidth control module is used to control the transportation speed of each computer in LAN and the maximum volume of data transferring every day. Following show a [Bandwidth Control Config] dialog:



Operation instruction:

1. Select a group which you want to configure in list [Group].
2. In the tab [Computer Traffic]: limit each computer in the selected group with bandwidth. Enter a digit in each blank to limit the inbound, outbound and total traffic.
3. In the tab [Computer Quota]: limit each computer in the selected group with quota in a day. Enter a digit in each blank to limit the inbound, outbound and total quota.
4. In the tab [Group Traffic]: limit the group with bandwidth which is the total of bandwidth of all the computers in the group. Enter a digit in each blank to limit the inbound, outbound and total traffic.
5. In the tab [Group Quota]: limit the group with bandwidth which is the total of quota of all the computers in the group in a day. Enter a digit in each blank to limit the inbound, outbound and total quota.
6. Press <OK> or <Cancel>.

Additional instruction:

1. Bandwidth: Unit KB/s, network transportation speed.
2. Quota: Total volume of data every day, Unit MB/day.
3. Outbound: Data transferred from LAN to Internet.
4. Inbound: Data received from Internet to LAN.
5. Total: The sum of outbound and inbound.
6. The bytes here include not only the TCP, UDP contents, but also Ethernet headers, IP headers and TCP headers.